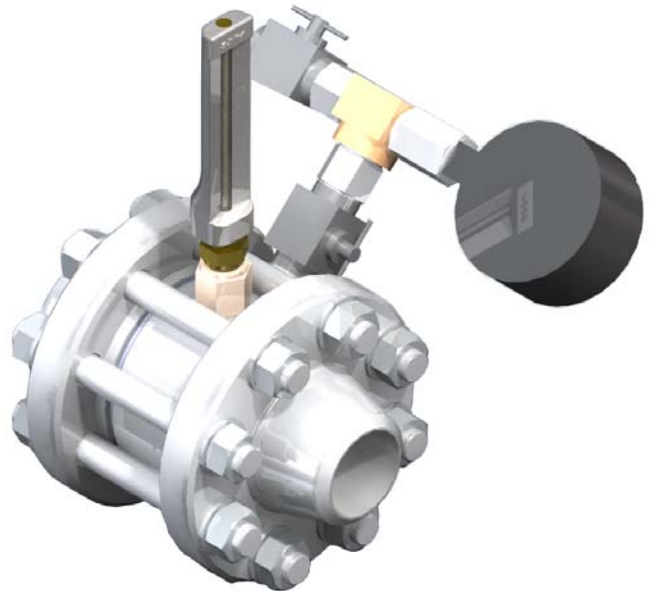


Gas throttling, temperature and pressure measuring device DL



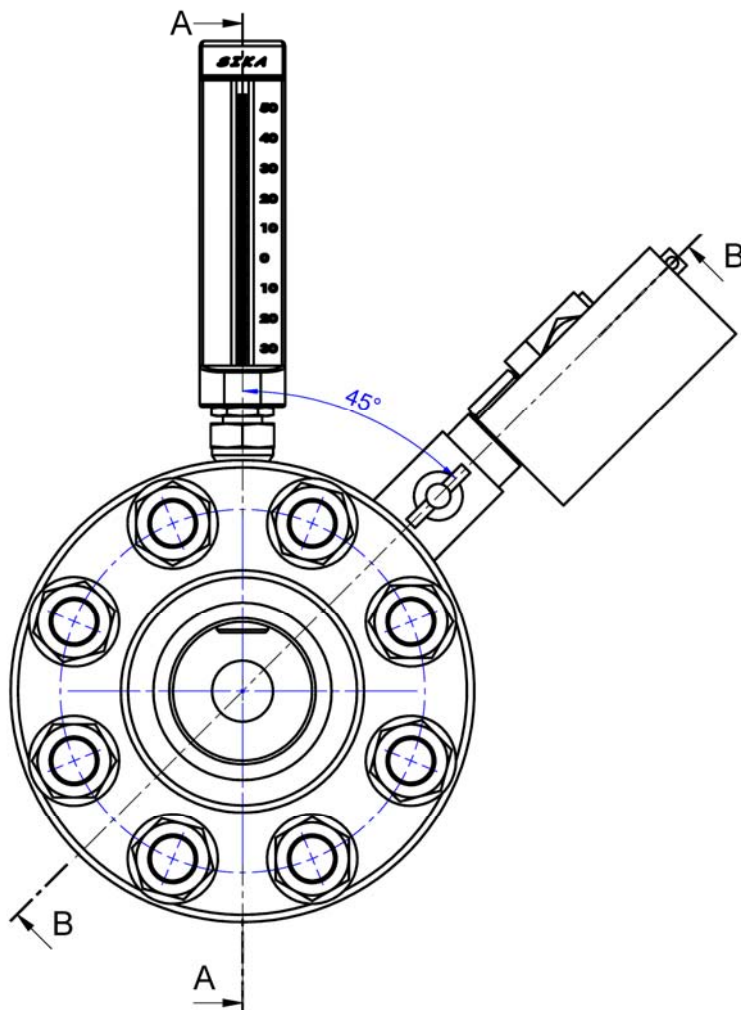
USE

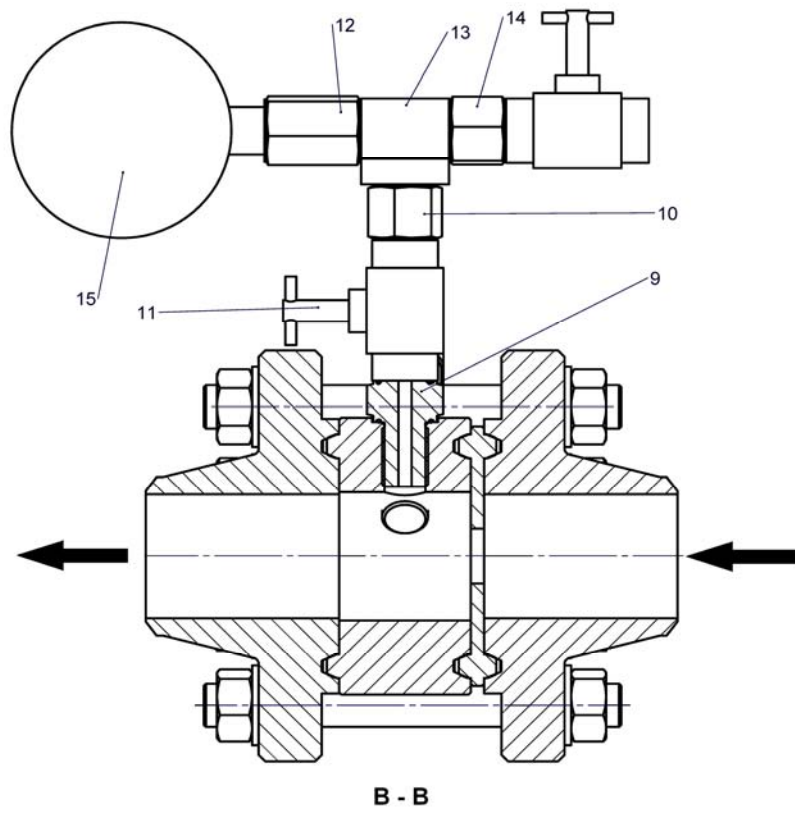
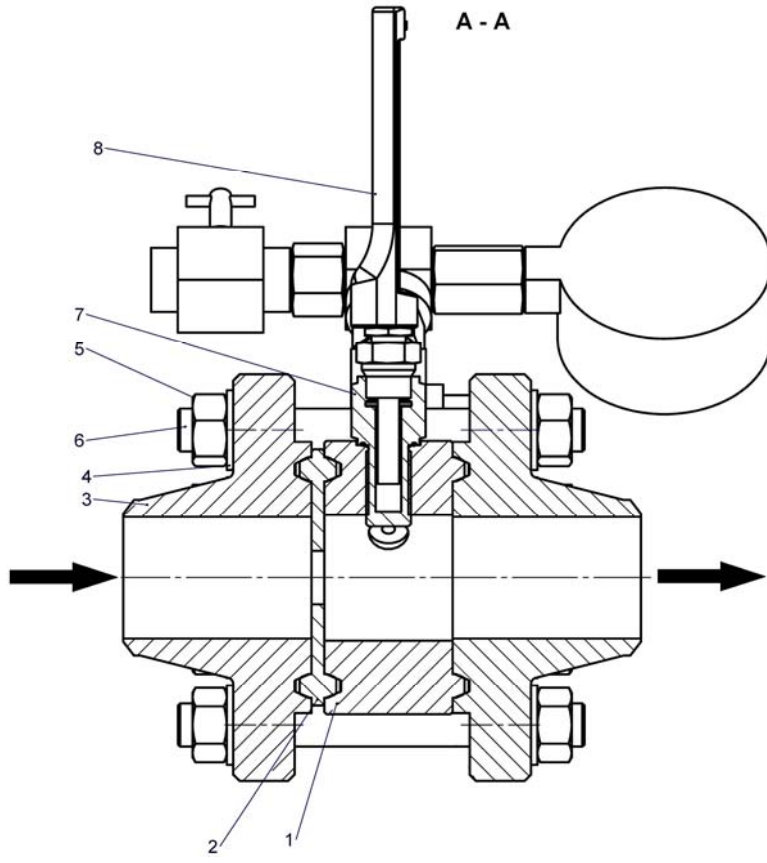
The device is mounted at the heater outlet in order to throttle the gas flow and reduce the pressure to the value of the downstream equipment pressure range, and to measure the gas.

TYPE AND DIMENSION RANGE

DL device provided with threaded neck flanges or welding neck flanges can be manufactured with the following characteristics:

- diameters: 2"; 2 1/2"; 3 1/8";
- pressures: 64; 140; 210; 350 bar.





No	Part
1.	Measuring disk DL
2.	Convergeant orifice disk
3.	Flange
4.	Washer
5.	Nut
6.	Stud bolt
7.	Thermometer nozzle
8.	Liquid thermometer -30+50°C
9.	Pressure gauge nozzle
10.	Nipple
11.	Needle valve
12.	Nipple
13.	Stainless steel tee
14.	Nipple
15.	Pressure gauge

ORDERING CODE

DL	Dn	Pn	F / S	Characteristics
	2"			Nominal diameter
		140		Nominal pressure
			F	Flange type

Ordering code example: DL 2" x 140 F corresponds to the throttling device DL with the following constructive characteristics:

- nominal diameter 2";
- nominal pressure 140 bar;
- threaded neck flange

ORDER FORMULATION

To order a DL device, please provide the following data: DL Dn x Pn F / S (constructive variant: threaded neck flange or welding neck flange).

The hole in the convergent orifice disk (2) shall be established by the beneficiary or the beneficiary shall provide data regarding the pressure drop and the flow rate per hour.

The manufacturer reserves the right to make modifications without any prior notification.

CT Nr. 251 / 2011

TOTALGAZ INDUSTRIE
Nr. R.C.: J-22-3277/1994
CUI: RO6658553
IBAN: RO28BRDE240SV13842272400
B.R.D. G.S.G. Iași

Șos. Păcurari, nr. 128,
Iași, cod 700545, România
Tel. : 0040-232-216.391(2)
Fax : 0040-232-215.983
E-mail: office@totalgaz.ro
Web: www.totalgaz.ro

